

Attachment C – Approximate Mark Locations & Descriptions

Approximate Mark Positions, Colors, Shapes:

	Latitude	Longitude	Mark Color and Shape
L (Gate)	Approximately 0.1nm Upwind from Start Line		Yellow Tetras
RC Boat	20° 42.800'N	105° 18.800'W	Orange Flag
Start			Red Tetra to Port
Mark W2	Approx. 1.8nm Upwind from RC		Anderson(Orange 8 ft tetra)
Mark W1	Approx. 1.0nm Upwind from RC		Yellow Tetra (ODs)
Mark LC	20° 43.809'N	105° 21.851'W	Orange Tetra
Mark S	20°40.110'N	105°18.310'W	Orange Tetra
Mark C	20°39.000'N	105°15.710'W	PV Sea Buoy (fixed)
Finish			Red Tetra to STB
Note: See Attachment C for Course A&B Mark Locations			

Mark Layout Notes:

Marks W1 & W2 will be placed based on wind direction, and will be approximately to weather of the committee boat.

These mark positions depend on the wind direction on race day.

Mark W1 is the One Design Fleet Windward, it is NOT a mark for other courses.

Mark LC is approximately 1.25nm bearing 125°M from the La Cruz breakwater.

Mark S is in safe water (~ 45ft) approximately 1 NM off the Ameca River, Mark S also serves as a limit mark for safe water on the distance courses. Mark S and the shore is an OBSTRUCTION under the rules. Boats may not sail between Mark S and the shore unless it is a turning mark. ***There is a shoal off the river that will ruin your day ... don't go there.***

NOTE: Mark Shapes and Colors (if changed) will be announced at the radio 15 minutes before the first warning on VHF 72. The locations shown are approximate. If there is a difference between the actual mark position and the coordinates above, ACTUAL MARK POSITION AND COLOR WILL ALWAYS PREVAIL. Please hail the RC if a mark is missing. The RC may ask the fleet to continue to race rounding stated GPS coordinates.

Redress will *not* be granted for mark positions different from published Lat/Lon.

Attachment C – 2025 VYC Courses

<p>Course 1 Start W2 – Starboard LC – Port S – Port Finish Approx 12.2nm</p>	<p>Course 4 Start W2 – Port S – Port LC – Port W2 – Port Finish Approx 14.2nm</p>
<p>Course 2 Start W2– Starboard LC – Port S – Port C – Port S – Starboard Finish Approx 17.9nm</p>	<p>Course 5 Start W2 – Port S – Port C – Port S – Starboard LC – Port W2 – Port Finish Approx 19.8nm</p>
<p>Course 3 Start W2 – Port S – Port C – Port S – Starboard Finish Approx 12.8nm</p>	<p>Course 6 (2 – 3) See Note Start W2 – P L – Gate (P or S) W2 – Port Finish 6-2 Approx 7.2nm 6-3 Approx 10.8nm</p>
<p>One Design Course Start W1 L W1 Finish Approx 4.0nm</p>	

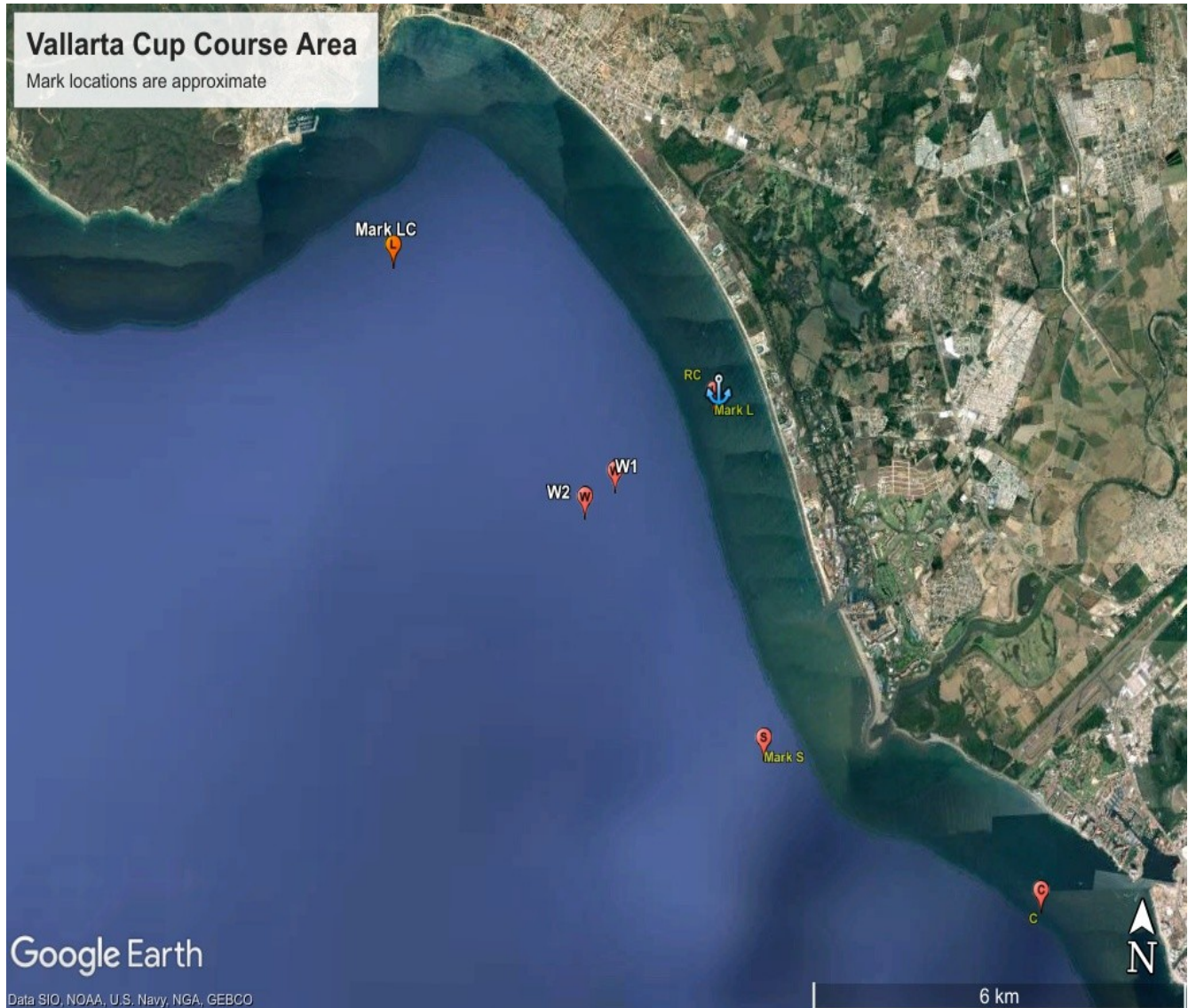
Note: The W/L Courses (Course 6) are 2 or 3 laps. The number of laps will be announced before the Preparatory Signal for the class.

THE FINISH: Downwind finishes (Courses 4,5, &6) are between a Red Tetra on the PORT End and a BLUE flag on the RC Boat on the STARBOARD End. Do not sail through the Start Line when you finish.

Pursuit race Course and Start times will be posted on the ONB not later than 90 minutes before the first starting time. The RC may announce the Course on VHF 72 the morning of the race. The starting times may be posted on the BBR Website for reference.

Attachment C – 2025 VYC Courses

Racing Area



Marks shown in Approximate Locations

“W2” is shown for a Wind direction of 235° M

“VB” is the Navy mark close to the shoal it marks an Obstruction. It is NOT a mark of our courses.